

2022 / 2

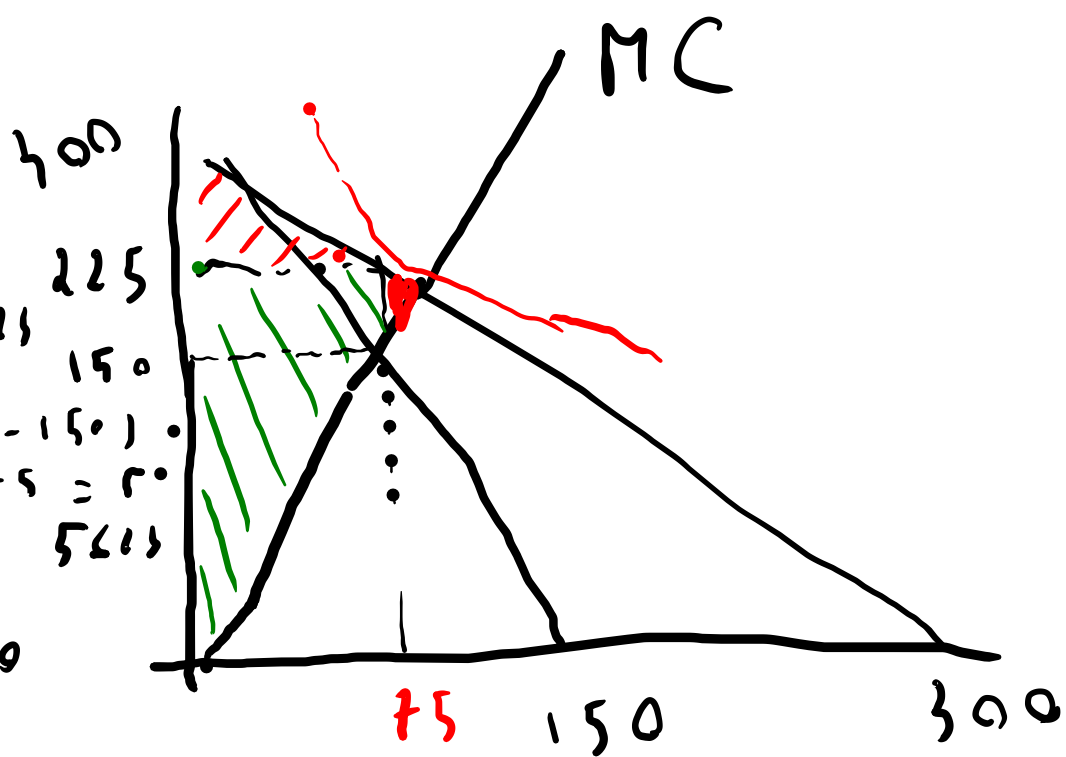
$$P = 300 - Q$$

$$TC = 900 + Q^2$$

$$\frac{150 \cdot 75}{2} = 5625$$

$$SP = (225 - 150) \cdot 75 = 5625$$

$$MC(Q^*) = 150$$



a.

$$MC = 2Q$$

$$MR = 300 - 2Q$$

$$TR = 300Q - Q^2$$

$$FOC = 300 = 4Q$$

$$Q^* = 75$$

$$P^* = 225$$

$$SC = \frac{(300 - 225) \cdot 75}{2} = 2812,5$$

② CP

$$Q = 300 - P \cdot 0.3$$

$$300 - Q = 2Q$$

$$Q^* = 100$$

$$P^* = 200$$

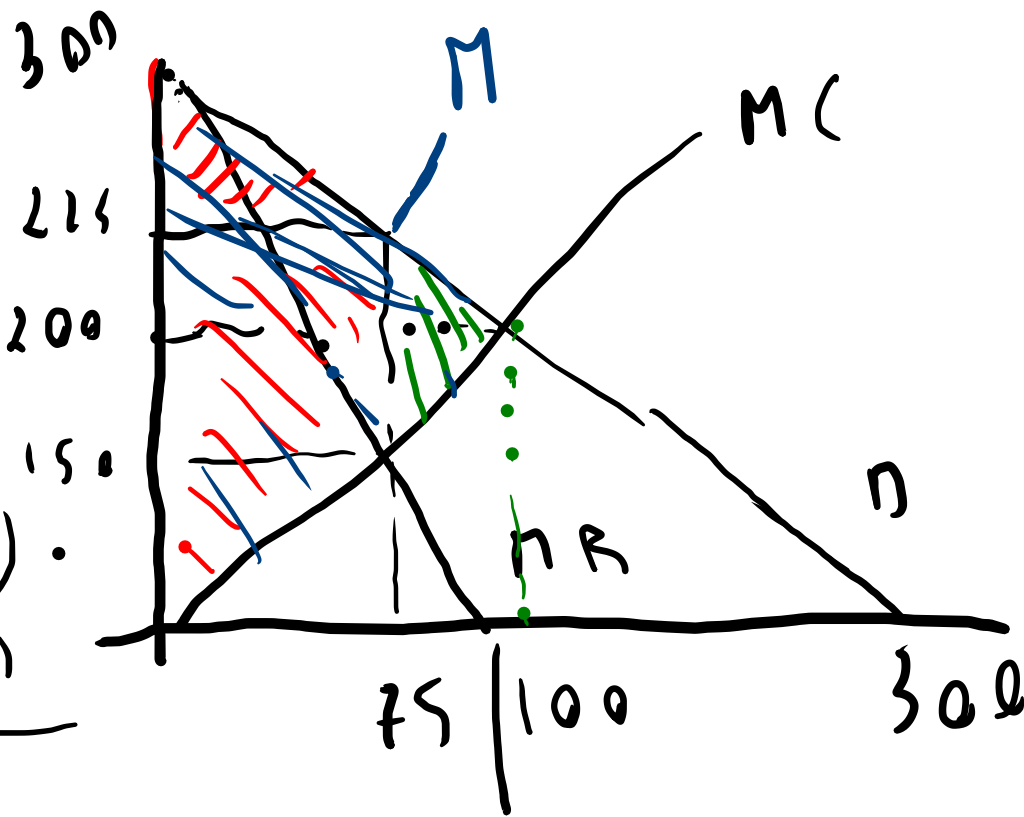
$$\frac{P - MC}{P} = \frac{225 - 150}{225} = 0.3$$

$$PN = \frac{(225 - 150) \cdot (100 - 75)}{2}$$

$$SC^{CP} = \frac{300 - 200}{2} \cdot 100 = 5000$$

$$SP^{CP} = \frac{200 \cdot 100}{2} = 10000$$

$$Q = 75$$



$$M = \frac{\Delta Q / Q}{\Delta P / P} = \frac{P}{Q} \frac{\Delta Q}{\Delta P}$$

$$= -1 \frac{225}{75} = -3$$

$$\text{MARK-UP} = \frac{1}{3} = 0.3$$

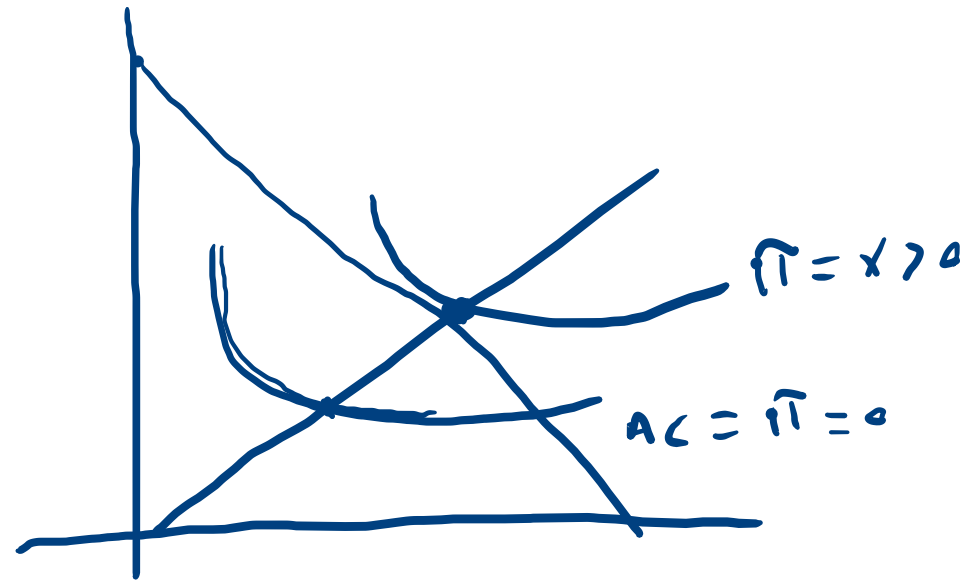
①

$$TC = 900 + Q^2$$

$$AC = \frac{900}{Q} + Q$$

$$\frac{dAC}{dQ} = -\frac{900}{Q^2} + 1 = 0$$

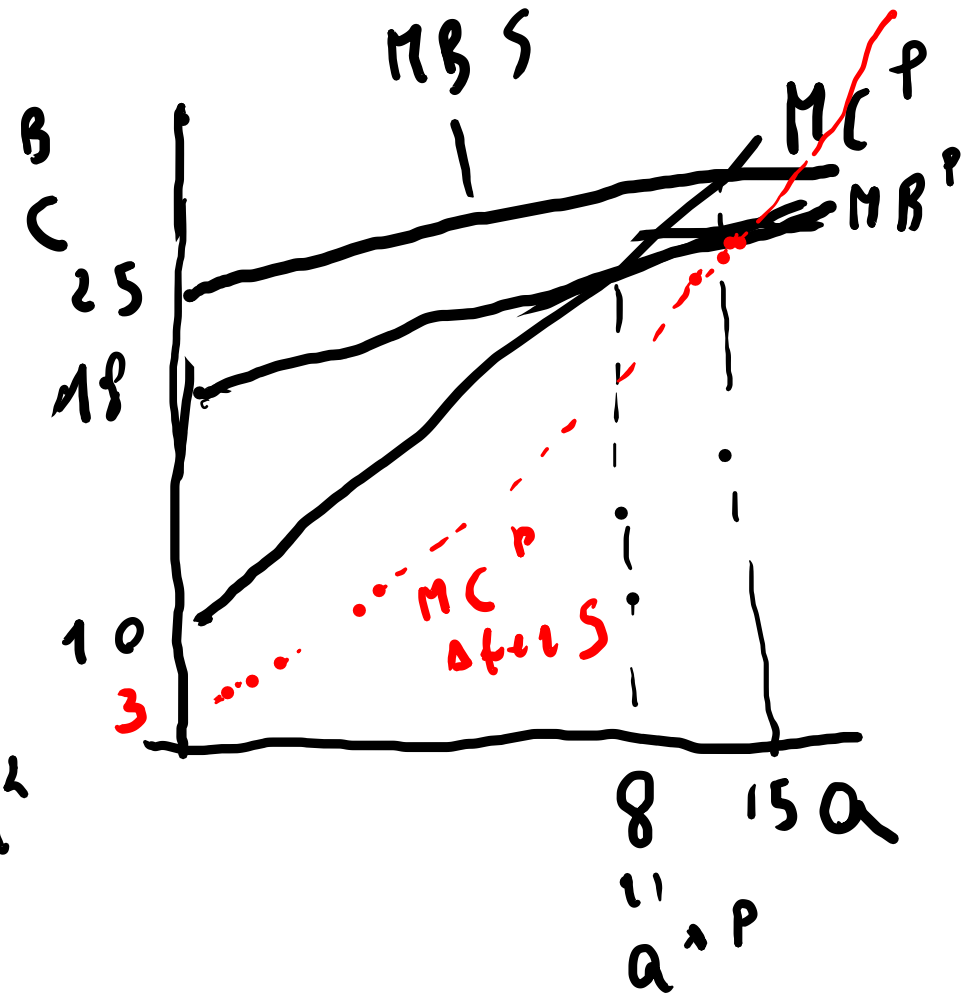
$$Q = \sqrt{900} = \pm 30$$



Q^{-1}
 Q^{-2}

EX cep 12

ISTRUZIONE



$$TC = 10a + a^2, \quad a = \text{anni}$$

$$BT^P = 18a + \frac{1}{2}a^2; \quad BT^S = 25a + \frac{1}{2}a^2$$

$$MC^P = 10 + 2a$$

$$MB^S = 25 + a = 10 + 2a$$

$$MB^P = 18 + a = a^* = 8$$

$$a^{*xS} = 15$$

$$X = 7 \quad \leftarrow 18 + a = 10 + 2a - X \quad (\text{sucessione})$$

EX 12 ; MUSICA e ECONOMIA

L 1000

M 500 NO EXT

150 EXT.

$$INS = 200$$

$$\boxed{1300}$$

$$\Delta$$

$$\parallel$$

$$\pi^L = 1000 + 75 = \underline{1075} \quad 350 - x = x - 200 \Rightarrow x = 275$$

$$\pi^M = 500 - 200 - 75 = \underline{225}$$

a.) $BS = 1000 + 150 = 1150$

$$BS^M = 1000 + 500 - 200 = 1300$$

b.) DIRITTI a LUCA

$$P_{MAX}^M = 350$$

$$P_{MIN}^L = 200$$

© DIRITTI a M

$$P_L^{\text{MAX}} = 1000$$

$$P_M^{\text{MIN}} = 350$$

$$1000 - X = X - 350$$

$$2X = 1350$$

$$X = 675$$

$$\pi^L = 1000 - 200 - 475 = \underline{325}$$

$$\pi^M = 500 + 475 = 975$$

1300