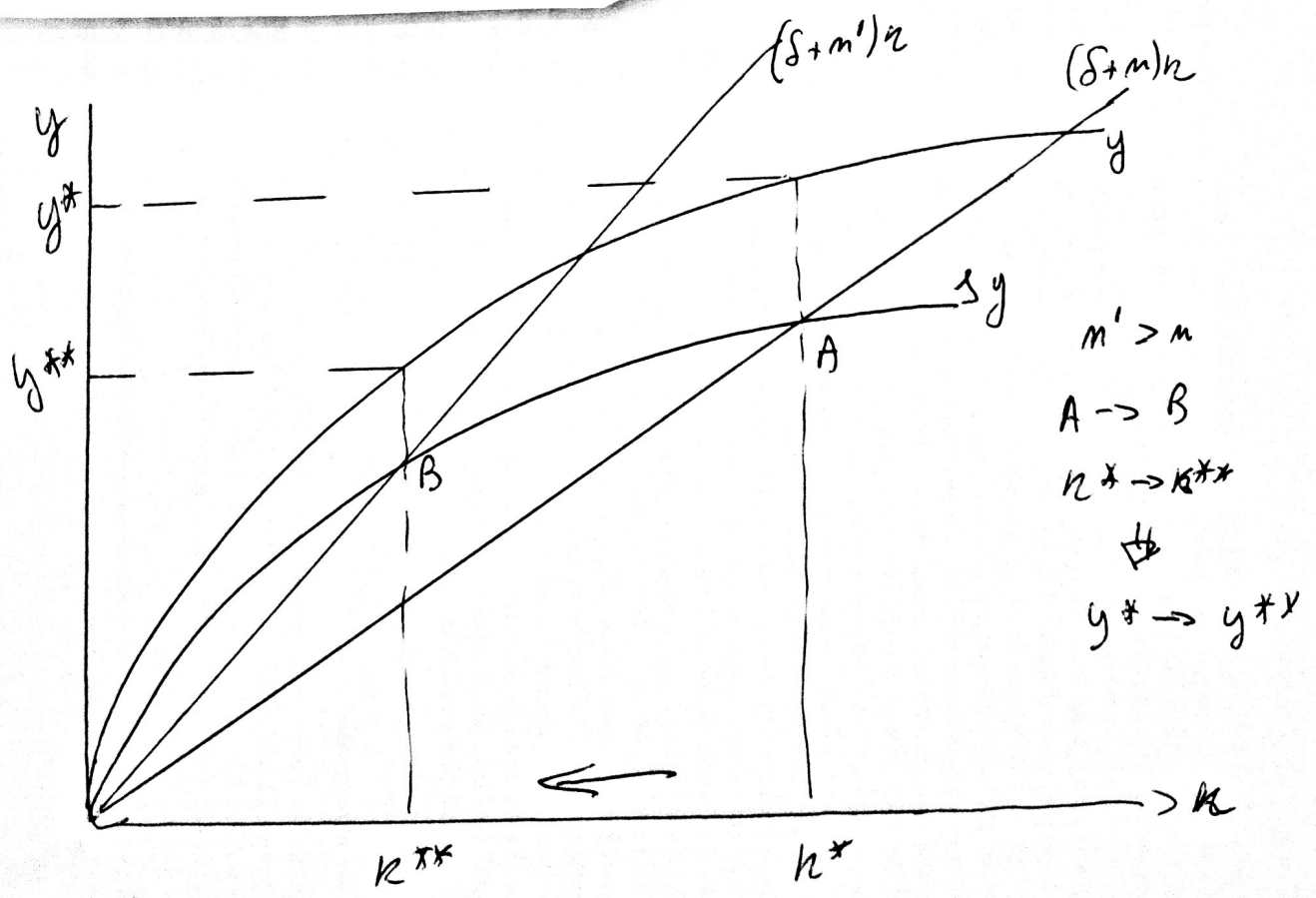


$s' > s$
 $A \rightarrow B$
 $k^* \rightarrow k^{**} \Rightarrow y^* \rightarrow y^{**}$
 fig. 3.3.



$m' > m$
 $A \rightarrow B$
 $k^* \rightarrow k^{**}$
 \Downarrow
 $y^* \rightarrow y^{**}$

fig. 3.4.